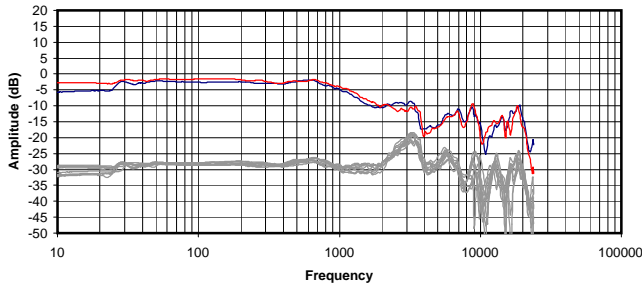
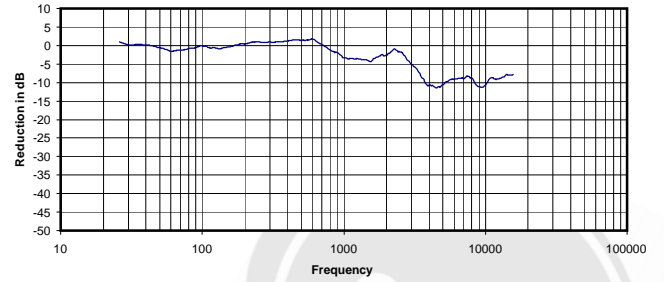


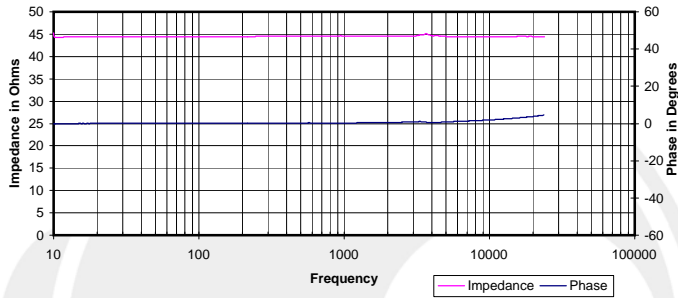
**Frequency Response**  
 Top - Compensated and Averaged  
 Bottom - Raw Data for Five Headphone Positions



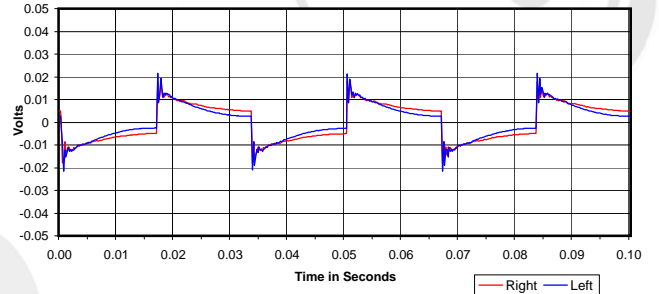
**Isolation**  
 Attenuation of External Sound vs. Frequency



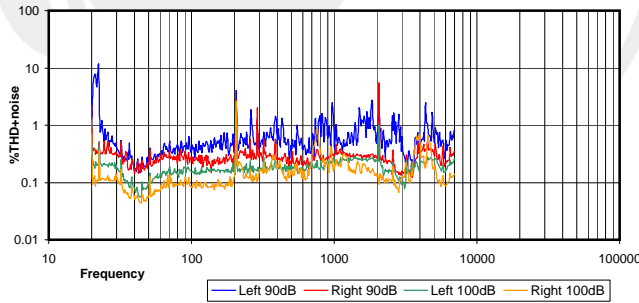
**Electrical Impedance and Phase**  
 Measured with 600 Ohm output impedance.



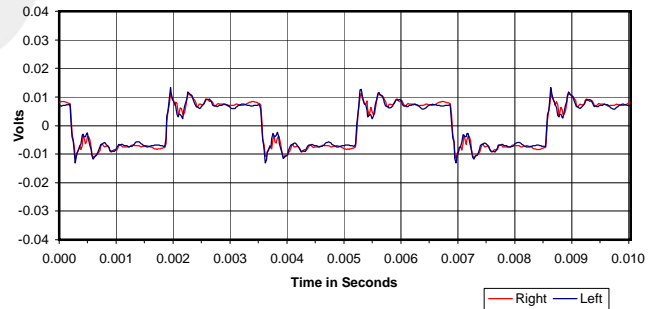
**30 Hz Square Wave**



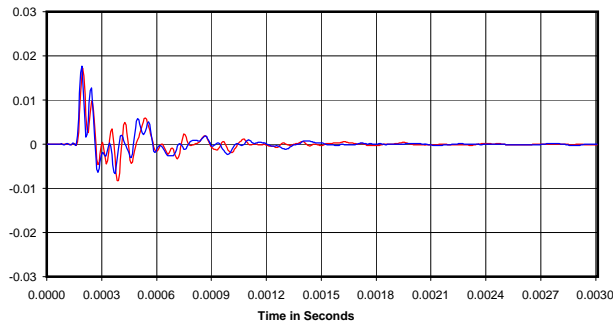
**%THD+noise @ 90dB and 100dB**



**300 Hz Square Wave**



**Impulse Response**



Volts RMS required to reach 90dB SPL:  
 Impedance @ 1kHz:  
 Power Needed for 90d BSPL  
 Broadband Isolation in dB (100Hz to 10kHz):

0.198 Vrms  
 45 Ohms  
 0.88 mW  
 -2 dB

